



CITY COUNCIL AGENDA

15728 Main Street, Mill Creek, WA 98012 (425) 745-1891

Pam Pruitt, Mayor • Brian Holtzclaw, Mayor Pro Tem • Sean Kelly
Donna Michelson • Vince Cavaleri • Mike Todd • Mark Bond

Regular meetings of the Mill Creek City Council shall be held on the first, second and fourth Tuesdays of each month commencing at 6:00 p.m. in the Mill Creek Council Chambers located at 15728 Main Street, Mill Creek, Washington. Your participation and interest in these meetings are encouraged and very much appreciated. We are trying to make our public meetings accessible to all members of the public. If you require special accommodations, please call the City Clerk at (425) 921-5732 three days prior to the meeting.

The City Council may consider and act on any matter called to its attention at such meetings, whether or not specified on the agenda for said meeting. Participation by members of the audience will be allowed as set forth on the meeting agenda or as determined by the Mayor or the City Council.

To comment on subjects listed on or not on the agenda, ask to be recognized during the Audience Communication portion of the agenda. Please stand at the podium and state your name and address for the official record. Please limit your comments to the specific item under discussion. Time limitations shall be at the discretion of the Mayor or City Council.

Study sessions of the Mill Creek City Council may be held as part of any regular or special meeting. Study sessions are informal, and are typically used by the City Council to receive reports and presentations, review and evaluate complex matters, and/or engage in preliminary analysis of City issues or City Council business.

Next Ordinance No. 2016-809

Next Resolution No. 2016-561

**September 13, 2016
City Council Meeting
6:00 PM**

CALL TO ORDER:

FLAG SALUTE:

ROLL CALL:

AUDIENCE COMMUNICATION:

- A. Public comment on items on or not on the agenda

PRESENTATIONS:

- B. Proclamation: VFW POW/MIA
(Mayor Pruitt)
- C. Proclamation: Edmonds Community College
(Mayor Pruitt)

NEW BUSINESS:

- D. Authorization to hire Project Engineer
(Rebecca C. Polizzotto, City Manager)

STUDY SESSION:

- E. Discussion:
- Retreat Planning
 - Code Enforcement Philosophy
 - Development Update

CONSENT AGENDA:

- F. Payroll and Benefit ACH Payments in the Amount of \$279,203.76
(Audit Committee: Mayor Pro Tem Holtzclaw and Mayor Pruitt)

AUDIENCE COMMUNICATION:

- G. Public comment on items on or not on the agenda

ADJOURNMENT

Proclamation

WHEREAS, in 1998, the United States Congress designated the third Friday in September of every year as POW/MIA National Recognition Day; and

WHEREAS, tens of thousands of members of our nation's Armed Forces have endured unimaginable suffering and privation as Prisoners of War; and

WHEREAS, thousands of other loyal Americans served and sacrificed in the defense of liberty and freedom, but, tragically, never returned home; and

WHEREAS, there is evidence that Americans are still being held in captivity; and

WHEREAS, American Armed Forces have a long-held commitment to the vow to "never leave a service member behind;" and

WHEREAS, our grateful nation will never forget the pain suffered by POW/MIA families to live without knowing their loved ones' fate or knowledge of their final resting place; and

WHEREAS, our grateful nation expresses its gratitude to American POW's and MIA's and will always reinforce the vow, "You are not forgotten."

NOW, THEREFORE, I, Pam Pruitt, the Mayor of the City of Mill Creek, on behalf of the City Council, proudly join the Veterans of Foreign Wars Post #8870, in proclaiming September 16, 2016 as POW/MIA National Recognition Day in the City of Mill Creek; and be it further

RESOLVED, that the Mill Creek City Council recognize POW/MIA National Recognition Day by inviting its citizens to plan and conduct appropriate remembrances, ceremonies, and activities.



Signed this 13th day of September, 2016.

Pam Pruitt, Mayor

Attest _____
Kelly M. Chelin, City Clerk

Rebecca C. Polizzotto, City Manager

Proclamation

WHEREAS, Edmonds Community College was established in 1967 and celebrates 50 years of supporting student success; and

WHEREAS, the college impacts the lives of more than 20,000 students a year and serves more than 1,400 international students from 62 countries; and

WHEREAS, the college transforms lives through exemplary, nationally recognized educational and career pathways; and

WHEREAS, the college promotes respectful collaboration, communication, and interaction among students and employees and maintains a safe, healthy, and professional environment that fosters creativity, innovation, learning, and personal growth; and

WHEREAS, the college infuses sustainable and transparent practices throughout all aspects of its operations and programs and manages its resources with efficiency and integrity to ensure the long-term health of the college; and

WHEREAS, the college continuously explores, creates, and evaluates to improve the quality of lives, the college, the community, and the world; and

WHEREAS, the college requires equity and mutual respect and serves and celebrates a diverse community inclusive of religion, ethnicity, national origin, and sexual orientation, and does not discriminate based on gender, disability, age, or veteran status; and

WHEREAS, the college offers 61 associate degrees, 63 professional certificates and 55 certificates of completion in 25 different programs of study and partners with local businesses to match its training to employer needs; and

WHEREAS, the college has received 19 National Science Foundation grants and continues to improve its ability to educate and support our region's future scientists, technologists, engineers, and mathematicians; and

WHEREAS, the college contributes more than \$225 million annually to the Snohomish County economy and \$2.5 million annually in savings on social benefits; and

WHEREAS, the college strengthens our diverse community by helping students access educational and career opportunities in a supportive environment that encourages success, innovation, service, and lifelong learning.

NOW, THEREFORE, I, Pam Pruitt, the Mayor of the City of Mill Creek, on behalf of the City Council do hereby ask all citizens to join me in celebrating Edmonds Community College's 50 years of service to students and our community!



Signed this 13th day of September, 2016.

Pam Pruitt, Mayor

Attest _____
Kelly M. Chelin, City Clerk

Rebecca C. Polizzotto, City Manager



Agenda Item # D
Meeting Date: **September 13, 2016**

CITY COUNCIL AGENDA SUMMARY
City of Mill Creek, Washington

AGENDA ITEM: AUTHORIZATION TO HIRE PROJECT ENGINEER

ACTION REQUESTED:

Authorize the recruitment and hiring of a new Project Engineer position in the Department of Public Works.

KEY FACTS AND INFORMATION SUMMARY:

In 2014, a gap analysis identified the need for another engineer in the Department of Public Works. While the position was never filled due to budget constraints, the need still exists and is now critically important given the merger of the Public Works and Engineering Departments.

A new Project Engineer will help provide technical support that is currently lacking in the Surface Water Division. In addition to the administrative requirements of the NPDES permit, there is a need for a qualified engineer to assist with land development review and operational support. The new position may also provide capital project management and field inspection support for the adopted CIP.

Funding for the new position is available by reallocating available budget for the vacant Senior Planner position. A second engineer may also help reduce future consultant expenditures by performing in-house design work on relatively simple projects, such as sidewalk and storm pipe repairs, which will be an ongoing annual need for the foreseeable future. For a typical storm pipe repair project, a design consultant will cost \$50,000 - \$100,000.

CITY MANAGER RECOMMENDATION:

The City Manager recommends authorization to proceed with the recruitment and hiring of a new Project Engineer position in the Department of Public Works at a pay grade 18.

ATTACHMENTS:

- Job Description

Respectfully Submitted:


Rebecca C. Polizzotto
City Manager

G:\EXECUTIVE\WP\COUNCIL\SUMMARY\2016\Project Engineer.docx

CITY OF MILL CREEK
POSITION DESCRIPTION

POSITION TITLE:	Project Engineer	JOB CLASSIFICATION:	Engineer
DEPARTMENT:	Engineering	REPORTS TO:	Public Works Director
SALARY GRADE:	18	FLSA EXEMPT:	Yes
REPRESENTATION:	AFSCME	Approvals: CM:	_____ date: _____
		Approvals: HR::	_____ date: _____

GENERAL DESCRIPTION:

Under the supervision of the City Engineer, the Project Engineer serves as an in-house professional engineer. Assist in preparation of designs, plans and estimates for capital improvement projects, and review of land development proposals within established civil engineering practices and procedures. Position is responsible for a variety of engineering tasks such as design, construction, review and inspection of roadway and surface water capital improvement projects.

ESSENTIAL JOB FUNCTIONS:

1. Provide project management of all phases of City capital improvements from scoping through design, bidding and construction.
2. In-house preparation of plans, specifications and estimates (PS&E), design, and construction inspection of roadway, surface water, traffic and park improvements.
3. Review work products on capital projects requiring outside consulting assistance; participate in the selection of consultants; negotiate and monitor contracts and services of outside firms to assure compliance; recommend use of and/or approval of payments to consultants.
4. Provide technical guidance for operational issues on the City's streets and surface water systems.
5. Provide written and verbal reports as necessary on projects and contracts; present reports to outside groups, City Council, commissions or others as needed.
6. Review and comment on application materials and engineering plans for private commercial and residential land development projects within the City or Municipal Urban Growth Area for traffic impacts, compliance with roadway and drainage standards, maintenance and constructability, inspect and/or coordinate inspection of private developments.
7. Meet with citizens and citizen groups, Home Owner's Associations and business associations as necessary to respond to inquiries, complaints, and requests from property owners and the general public.
8. Document, research and respond to citizen's inquiries related to drainage and roadway issues.
9. Implement and manage NPDES permit requirements such as: public education and outreach, public involvement and participation, illicit discharge detection, controlling runoff from development/construction, NPDES annual report preparation.

This is not designed to be a comprehensive listing of all activities, duties and responsibilities required of the job. Other duties may be assigned and/or performed. (Because of the small size of the City staff, each team member is expected to perform a wide range of office and field duties as may be required from time to time.)

QUALIFICATIONS:

To perform this job successfully an individual must be able to perform each essential job function satisfactorily. The requirements listed below are representative of the knowledge, skill, and/or ability required. Reasonable accommodations may be made to enable individuals with disabilities to perform the essential functions.

Knowledge of:

- Principles and practices of civil engineering with an emphasis on design of roadway and stormwater projects.
- Capital project management in a municipal environment.
- Federal, state and local laws relating to civil engineering, municipal projects and environmental protection.
- Typical residential and commercial land development review processes and construction practices.
- Applicable laws, codes, regulations, policies and procedures associated with municipal project design and construction, including but not limited to, WSDOT standard specifications and design/construction standards, public bidding procedures, and environmental review requirements.
- Correct English usage, grammar and vocabulary at the college graduate level.

Ability to:

- Maintain regular, predictable and reliable attendance during scheduled hours.
- Prepare plans, specifications and estimates required for capital improvement program projects.
- Prepare concise, well-documented reports and related visual materials to ensure fulfillment of project objectives and compliance with codes.
- Utilize a variety of computer applications, including Microsoft Office programs and AutoCAD software.
- Multi-task and manage a variety of concurrent projects and tasks.
- Perform difficult and complex engineering mathematical computations.
- Communicate effectively both orally and in writing.
- Plan, organize and lead complex projects. Make verbal presentations and lead meetings.
- Meet schedules, budgets, commitments and time lines.
- Interpret, apply and explain codes, rules regulations, policies and procedures.
- Prepare, assemble, and analyze technical information related to land use proposals, studies, and decisions.
- Establish and maintain effective working relationships with a wide variety of people, including the general citizenry, special interest groups, appointed and elected officials, and staff.

MINIMUM REQUIREMENTS:**Experience and Education/Training:**

- Bachelor of Science in Civil Engineering or a related field, and at least two years of applicable experience, or any equivalent combination of education and experience which provides the applicant with the knowledge, skills, and abilities required to perform the job.

Licenses/Certifications required:

- Be currently certified as an Engineer-In-Training in the State of Washington.
- Valid Washington State driver's license and an insurable driving record, or ability to obtain them within one (1) month of hire.

PREFERRED REQUIREMENTS:

- Two years working with or for a local government
- Competent with AutoCAD software

PHYSICAL REQUIREMENTS / WORKING CONDITIONS:

The City of Mill Creek provides a tobacco-free environment for its employees; smoking/tobacco use is prohibited in City facilities and vehicles.

*See the attached questionnaire for position specific physical requirements and typical working conditions.

Projected Development Projects	2017	2018
	<i>Units</i>	<i>Units</i>
Wilcox MDR PP or BSP		12
Dorsey Short Plat	3	
Gill Short Plat	3	
Seattle Ridge	8	
Penny Creek Partners (EGUV)		
Clearview Dentist BSP		1
Harms Estate PP	13	13
MC Commons Phase II	1	
Arena Sports	1	
Misc. Tis		
Misc. Permits		
Misc. CU (1/yr)		
Misc. BSP (1/yr)		
SnoCo projects		

2016 Salary Data - Cities and Towns												
JOB TITLE: Engineer - Journey Level (Project Engineer)												
JOB CODE: 540												
Comments												
Summary Job Description: Applies civil engineering principles and practices in the preparation of plans, specifications and estimates related to the design, construction and maintenance of public works projects, within established civil engineering practices and procedures. Works on routine projects or specific areas of more complex projects under the supervision of a senior or project engineer. Typically requires a four year degree and 2-3 years experience.												
Jurisdiction	Local Title	Formal Salary Range			Flat Rate	Not Settled	Hours/Week	Number of Employees	Union Status	Job Match	Compa-ratio	Comments
		Low	Mid	High								
Bonney Lake (20,000)	Assistant Engineer	5,386	6,194	7,002			40	0	U	2		
Kenmore (22,320)	Civil Engineer	5,693	6,778	7,862			40	1	NU	2		
Turnwater (23,040)	Engineer II	5,663	6,282	6,901			40	1	NU	2		
Average:		5,581	6,418	7,255								
Mill Creek	Project Engineer (18)	5,415	6,270	7,124	grade 18					2	0.98	



Development Update

September 13, 2016
City Council

Mill Creek Sports



Mill Creek Sports



Mill Creek Sports

- Two-story building totaling 13,000 square feet
The first floor will have 2,250 square feet for the retail sales of sports memorabilia with the remaining area dedicated to storage retail and office use.
- Construction is anticipated to be complete by early next year



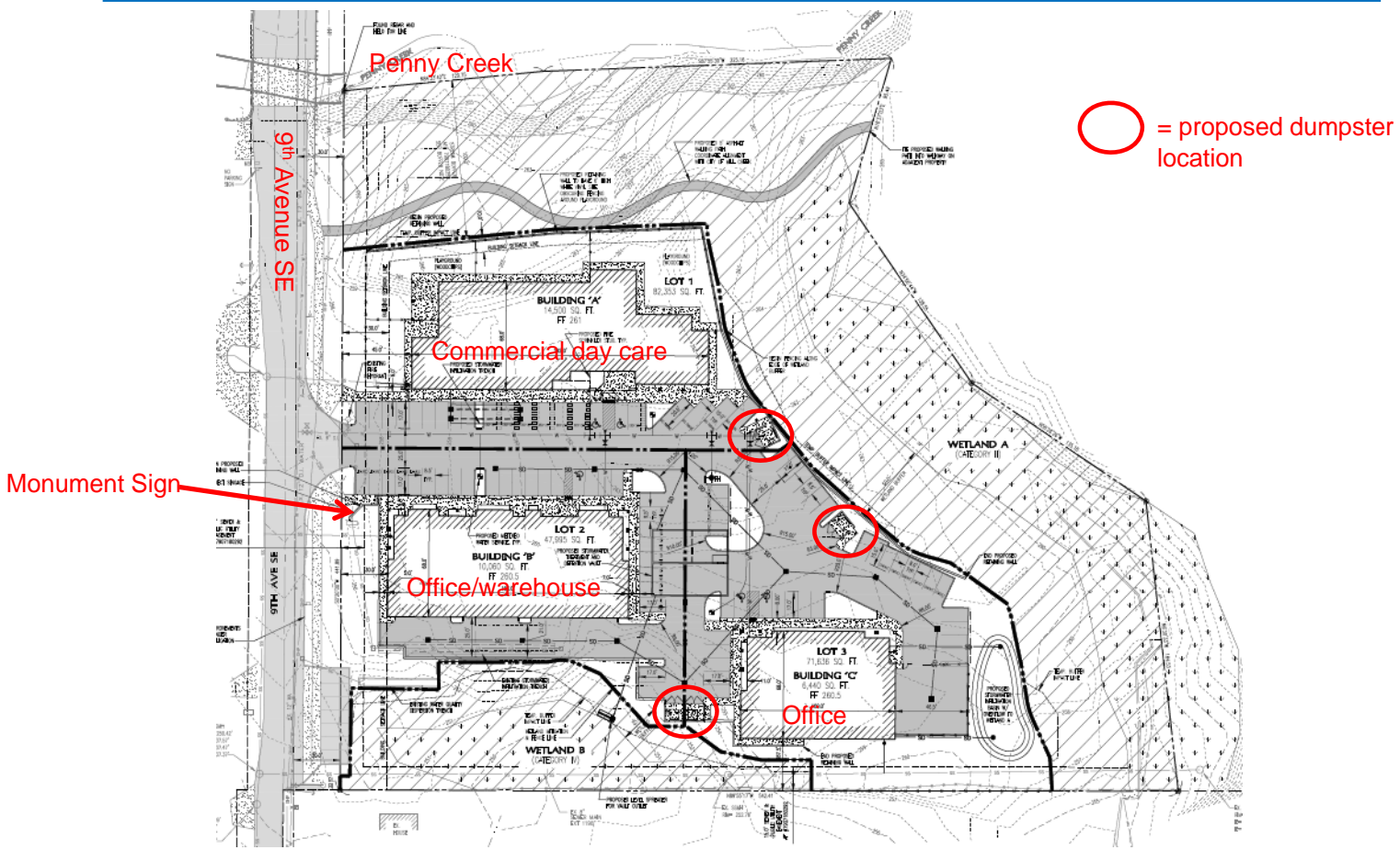
 EAST ELEVATION
Scale: 1/8"=1'-0"



Mill Creek Park Vista



Mill Creek Park Vista



Mill Creek Park Vista



Mill Creek Park Vista

- 84-stall parking lot
- Building A on Lot 1- 14,500 square feet of commercial day care use
Building B on Lot 2 - 10,060 square feet of office and warehouse uses
Building C on Lot 3 - 6,440 square feet of office use
- 5-foot wide asphalt trail within the Penny Creek buffer that connects to the Clock Tower Self Storage site will be constructed to provide access from SR 527 to the North Creek Trail



Seattle Ridge Plat



Seattle Ridge Plat



Seattle Ridge Plat



- 16 lots
- 50' roadway buffer & sidewalk



Harms Plat



Harms Plat



Harms Plat



- 28 lots
- 50' roadway buffer & sidewalk

Vintage at Mill Creek



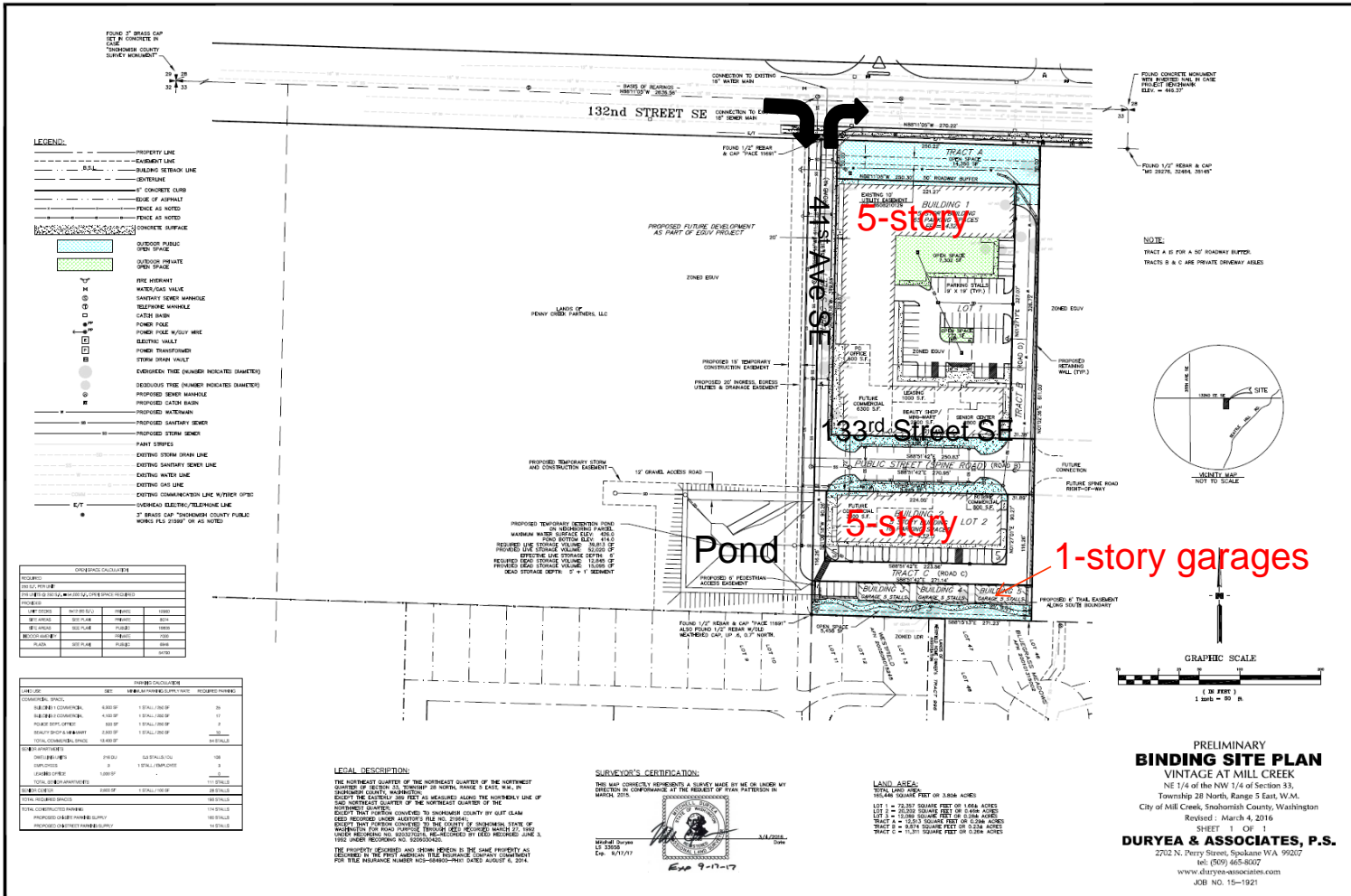
Vintage at Mill Creek



Vintage at Mill Creek



Vintage at Mill Creek



Vintage at Mill Creek



NORTHWEST PERSPECTIVE

- Two five-story buildings with ground floor commercial/retail and parking with residential units above.
- 216 senior housing units and 15,500 square feet of commercial/retail
- 2800 SF senior center
- 500 SF police satellite office
- 18 months to construct





Questions?

Rebecca Polizzotto

Subject: FW: Mill Creek City Ordinance

From: Dan Laney <danlaney@gmail.com>

Date: August 2, 2016 at 12:53:34 PM PDT

To: <ppruitt@cityofmillcreek.com>, <bholtzclaw@cityofmillcreek.com>, <skelly@cityofmillcreek.com>, <DMichelson@cityofmillcreek.com>, <vcavaleri@cityofmillcreek.com>, <MTodd@cityofmillcreek.com>, <MBond@cityofmillcreek.com>

Subject: Mill Creek City Ordinance

Dear City Council Members,

I own a house at 13515 29th AVE SE. I was recently ordered to remove my trailer from my driveway, as it was a violation of 17.22.080. I had complied immediately and filed for an appeal with the city clerk. I had a phone conversation with Tom Rogers who informed me that he received the appeal from the police station and then revoked my appeal. I speculate the appeal was forwarded to the police station because Support Officer Piggot was on vacation at the time the appeal was filed. After talking to Mr. Rogers, I am content with the decision to no longer pursue an appeal.

At the time the appeal was filed, I had also submitted a complaint about my neighbor's television antenna, which is strapped to his chimney. This would be a violation of code 17.22.090. I received an email from the city clerk, on Mr. Roger's behalf, explaining that this violation would not be enforced.

Dan, Thank you for sharing your concern about the antenna. You are right, MCMC 17.22.090 does prohibit TV antennas. However, in 1996, the Federal Communications Commission adopted the Over-the-Air Reception Devices Rule concerning governmental and nongovernmental restrictions on viewers' ability to receive video programming signals from direct broadcast satellites (DBS), multichannel multipoint distribution (wireless cable) providers (MMDS), and television broadcast stations (TVBS). The rule is cited as 47 C.F.R. § 1.4000. It prohibits restrictions that impair the installation, maintenance or use of antennas used to receive video programming. The rule applies to video antennas including direct-to-home satellite dishes that are less than one meter (39.37 inches) in diameter (or of any size in Alaska), TV antennas, and wireless cable antennas. The rule prohibits most restrictions that: 1.unreasonably delay or prevent installation, maintenance or use; 2.unreasonably increase the cost of installation, maintenance or use; or 3.preclude reception of an acceptable quality signal. Effective January 22, 1999, the Commission amended the rule so that it also applies to rental property where the renter has an exclusive use area, such as a balcony or patio. On October 25, 2000, the Commission further amended the rule so that it also will apply to customer-end antennas that receive and transmit fixed wireless signals. As a result of the FCC rule, the City is prohibited from enforcing the prohibition on TV antennas. This is a section of City Code that should be revised to reflect the FCC rule. Tom Rogers, Director of Community and Economic Development

I am not a legal, ordinance, or political expert. As I understand from Mr. Roger's explanation, recreational vehicle parking was allowed until Mill Creek annexed this neighborhood. I also

understand that the intent of the law was to remove junky looking property from the street view in order to sustain the aesthetic value of the neighborhood. I am also hearing that codes and laws are selectively enforced and the city law may conflict with federal laws. I have not read the entire city of Mill Creek ordinance, but I do have a request regarding 17.22.080, vehicle parking.

I see this code to be more of an association issue and not a legal matter. I do not understand why the city should have a legal concern to pass an ordinance governing the parking of one's property on one's property. If I lived in a community with a homeowner's association, I would understand the homeowner's association's concern. And if they were to request removal, I would understand that. If the homeowner has garbage or junk in their yard, I would understand the city's right to do something about it, since that could have significant health impacts to the public.

In my opinion, ordinance codes of this nature only leads to neighbor disputes and has no legal advantages, only legal disadvantages. I would like to request that both codes, 17.22.080 vehicle parking, and 17.22.090 antennas, be abolished. Or I would at least request that it would be discussed and voted on by city council members to be abolished.

Can you help me to get this matter on the agenda? If I need to take further action, can you guide me towards contacts or resources to have my voice heard? If the code is no longer in effect or will no longer be enforced, I would like to know, because I am paying to have my trailer stored elsewhere.

At the time I purchased my home, it was advertised on the listing that RV parking in that spot on my driveway is available. All of the previous owners have used that space on the drive way for recreational vehicle parking. I would think at the very least, since precedence has been set, and that spot on the driveway has been maintained as such, that I would continue to park my trailer in that spot, as I have been doing for the past few years. The reason I purchased this house is because RV parking was available and it is a neighborhood without a homeowner's association, and of course because it is in Mill Creek. I would love to park the trailer in the back yard, but unfortunately there is only a few feet between the house and either fence on the north and south property lines, restricting access of any car, truck, or trailer.

I look forward to your response. Do not hesitate to call or email at your convenience.

Best regards,

Dan Laney
Home Owner and Constituent
13515 29th AVE SE
Mill Creek, WA 98012
Mobile: (206) 235-1543



Date: September 13, 2016

Payroll Check Batches		
Dated	Check Numbers	Amount
09/09/16	ACH Automatic Deposit Checks	\$174,155.39
09/09/16	ACH Wire- FWT & Medicare Taxes	\$29,046.34
09/08/16	ACH Wire- ICMA RC- Def. Comp	\$907.94
09/08/16	ACH Wire- Assoc. of WA Cities	\$75,094.09
Total		\$279,203.76

Voided Checks	
Numbers	Explanation

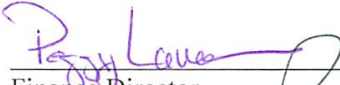
CLAIMS APPROVAL

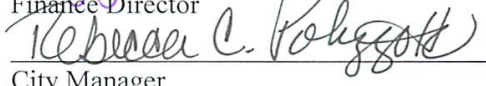
We, the undersigned Finance/Audit Committee of the City of Mill Creek, recommend approval of the ACH Automatic Deposit checks and ACH Wire Transfers in the amount of \$279,203.76.

We recommend approval of the above stated amount with the following exceptions:

Councilmember

Councilmember



 Finance Director


 City Manager

G:\Finance\WP\Payroll\Payroll Voucher Approval .doc

Statistical Summary

Statistical Summary

Company:A0W - City Of Mill Creek Service Center:0076 Pacific North West
 Week#:36
 Qtr/Year:3/2016
 Status:Cycle Complete
 P/E Date:08/31/2016
 Pay Date:09/09/2016
 Run Time/Date:18:45:55 PM EDT 09/06/2016

Taxes Debited	Federal Income Tax	23,022.08
Earned Income Credit Advances	0.00	
Social Security - EE	0.00	
Social Security - ER	0.00	
Social Security Adj - EE	0.00	
Medicare - EE	3,012.16	
Medicare - ER	3,012.10	
Medicare Adj - EE	0.00	
Medicare Surtax - EE	0.00	
Medicare Surtax Adj - EE	0.00	
COBRA Premium Assistance Payments	0.00	
Federal Unemployment Tax	0.00	
State Income Tax	0.00	
Non Resident State Income Tax	0.00	
State Unemployment Insurance - EE	0.00	
State Unemployment Insurance Adj - EE	0.00	
State Disability Insurance - EE	0.00	
State Disability Insurance Adj - EE	0.00	
State Unemployment/Disability Ins - ER	0.00	
Workers' Benefit Fund Assessment - EE	0.00	
Workers' Benefit Fund Assessment - ER	0.00	
Local Income Tax	0.00	
School District Tax	0.00	
Total Taxes Debited	29,046.34	
Other Transfers	Full Service Direct Deposit/Acct. No.000060104700Tran/ABA125000024	145,109.05
Total Amount Debited From Your Account	174,155.39	
Bank Debits & Other Liability	Checks	0.00
	Adjustments/Prepay/Voids	0.00
Taxes - Your Responsibility	None this payroll	
Total Liability		174,155.39



EZLink Contributions

CONFIRMATION

Your confirmation number is 41242101.

Please retain any printed copies for your records. It is not necessary to mail these copies to ICMA-RC.

PLAN INFORMATION

Plan Name	CITY OF MILL CREEK	Plan Number	302029
Tax ID	91-1225895	Contact	BETSIE DEVENNY (425)921-5731

Address	15728 MAIN STREET MILL CREEK, WA 98012
----------------	---

SUBMISSION INFORMATION

Submission #	102224270	Number of Participants	8
Payroll Date	09/09/2016	Number of Transactions	8
Date Submitted	09/08/2016	Time Submitted*	05:14:06 PM ET

* Note: Please note that your payroll date and the posting date for your contribution may not be the same date. The contribution will post to participant accounts when your contribution file and funding are received in good order by 4:00p.m. Eastern Time on a business day the NYSE is open.

REMITTANCE INFORMATION

Plan Total	\$907.94
(-) Forfeiture	\$0.00
(+/-) Adjustments	\$0.00
Total Check/Wire	\$907.94
Remittance Method	Wire/ACH

ADJUSTMENTS INFORMATION

Use from Forfeiture Account	\$0.00
Use prior overpayment amount	\$0.00
Pay off prior underpayment	\$0.00
Expected Deposit Amount	\$907.94
Employer Phone Number	425-921-5731

(C) Copyright 1996-2016 ICMA Retirement Corporation. All Rights Reserved.

Page 1

EZLink is an electronic, Internet-based administrative tool offered by ICMA-RC to assist our clients with their retirement plan administration. To the extent EZLink and other electronic Internet-based products and services offered by ICMA-RC are accessed and utilized by the client or client's employees and personnel, ICMA-RC bears no responsibility or liability for such use by those individuals accessing non-public personal information and failing to protect such information as required by law.

**ASSOCIATION OF WASHINGTON CITIES
MILL CREEK, CITY OF**

ACCOUNT SUMMARY - contains all changes to this account as of 09/08/2016 01:40:45 PM

FUND: 100

ACCOUNT NUMBER: 186 L

BILL MONTH:	09/2016
COVERAGE MONTH:	09/2016
PAYMENT DUE BY:	09/10/2016
CURRENT BILLING AMOUNT:	\$74,804.14
PRIOR OVERAGE OR SHORTAGE:	\$0.00
ADJUSTMENTS:	\$289.95
TOTAL AMOUNT DUE:	\$75,094.09

100 186 L 092016 0

Fund	Account Number	Bill Month	Amount Paid
100	186 L	09/2016	\$ <u>75,094.09</u>

If you have questions concerning your billing, please contact the Association of Washington Cities Office at (800) 562-8981 or (360) 753-4137 or Northwest Administrators, Inc. at (206) 726-3345.

MAIL PAYMENT TO: *If payment is made by check, please print a copy of this page and mail it with your payment to the following address.*

ASSOCIATION OF WASHINGTON CITIES
PO BOX 84303
SEATTLE, WA 98124-5603